

BALMAIN 209



Optional Monterey facade

Optional Provincial Classique facade

The Balmain 209 is the next dimension in maximum family comfort.

It's perfect for a growing family seeking plenty of practical open-plan living with an abundance of space to entertain.

Arrangement of rooms is everything you would expect in a modern home, with the centrally located kitchen being the focal point of a large home theatre/rumpus room and family/meals area. Featuring very generous bedrooms, master ensuite, a private study, computer nook and formal living/dining at the front, Hotondo has taken family enjoyment to the next level.

This is an ideal home that caters for all family needs, including a large outdoor entertainment area, just right for a BBQ on a warm summer day.

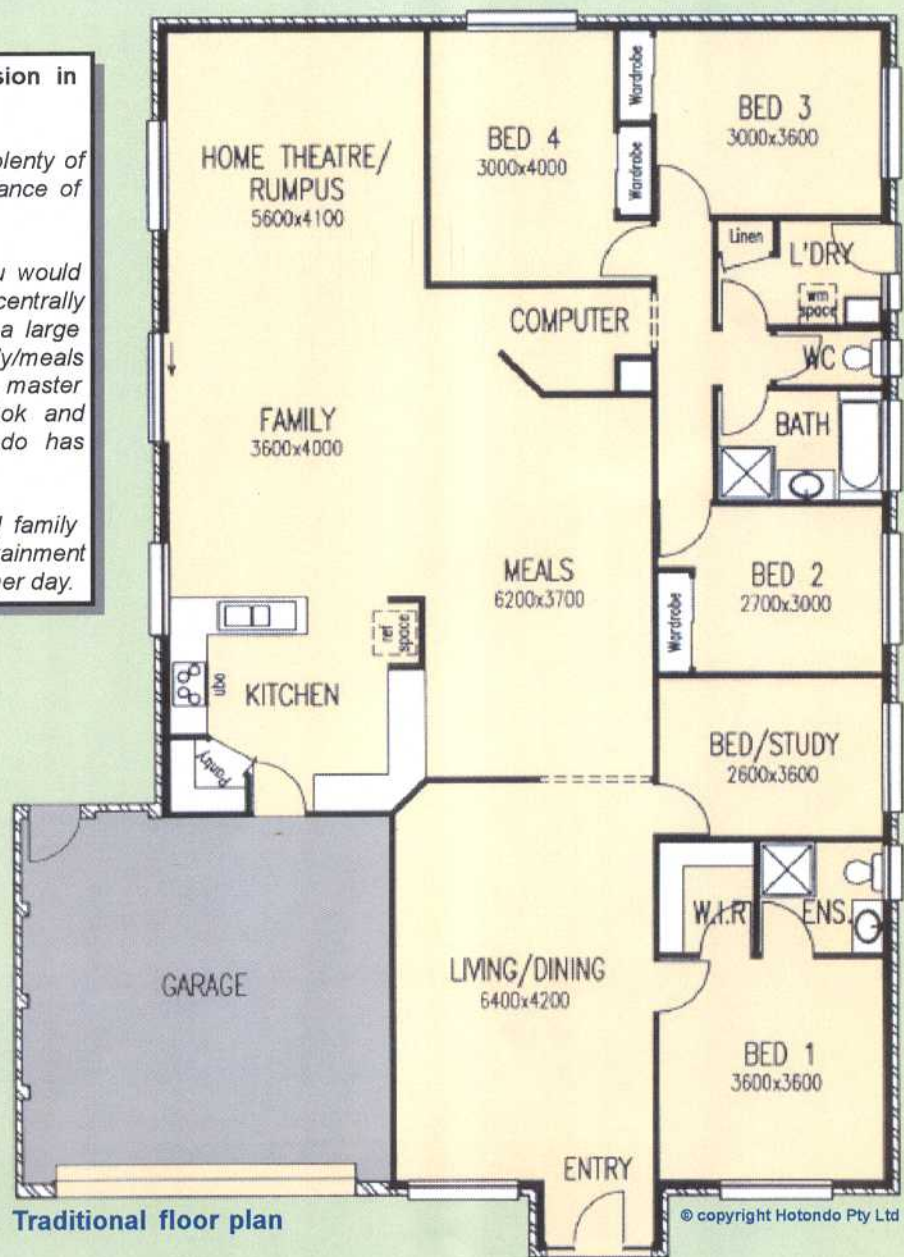
SPECIFICATIONS

Ground floor	209.27m ²
Garage	37.93m ²
Total	247.20m²
Width	14.25m
Length	20.21m

* Dimensions and sketches are approximate only. Check with your builder for local standard inclusions. Hotondo reserve the right to change plans, specifications, materials and suppliers without notice.



HOTONDO
Affordable Award Winning Homes



Traditional floor plan

© copyright Hotondo Pty Ltd

THE BEST OF BOTH WORLDS

Personal service from your local builder backed by Hotondo, the leading National network